

# 9th ANNUAL Lodi Valley

Full day with choice  
of 3 classes (lunch  
included) for \$40

Pre-Registration  
Required



**April 21, 2018**

**Lodi High School**

**1100 Sauk Street**

**Lodi, WI**

Sponsored by  
Lodi Valley Quilters Guild

**Directions to Quilt Academy**  
From the downtown Lodi intersection SR-60  
and Rt. 113, go west on SR-60 for 0.1 mile, bear  
right onto Sauk St. and go 1.1 miles.



April 21, 2018—9th Annual Quilt Academy

LVQG Member

Name \_\_\_\_\_ Address/City/Zip \_\_\_\_\_

*Instructor may send additional information*

Email \_\_\_\_\_ Phone \_\_\_\_\_

## Class Enrollment Form

List 6 Class Choices. We will do our best to honor three of your choices, but **no selection is guaranteed:**

Class \_\_\_\_\_ Class \_\_\_\_\_ Class \_\_\_\_\_ Class \_\_\_\_\_ Class \_\_\_\_\_ Class \_\_\_\_\_

Please mail form and make TUITION check payable to LVQG, PO Box 132,  
Lodi, WI, 53555 by February 15, 2018. NO REFUNDS AFTER MARCH  
1, 2018. Early registration is recommended. Classes subject to change with-  
out notice. For more information, go to [www.LVQG.org](http://www.LVQG.org)

All Kit Fees will be paid to instructor on day of Quilt Academy

Tuition ..... \$40.00  
\*LVQG members \$35.00  
Amount enclosed: \$ \_\_\_\_\_

New this year!

Charity Sew  
Come sit and sew for any amount of time.  
Everything is provided for you  
Help us make quilts for different charities

5th Annual  
LVQG  
Member  
Quilt Exhibit

Schedule

- 7:45-8:45 Registration  
(Receive Class Schedule)
- 8:00 Vendor Mall Opens
- 9:00-10:00 1st Period Class
- 10:00-11:00 Recess/Shopping
- 11:00-12:00 2nd Period A OR Lunch B
- 12:00-1:00 2nd Period B OR Lunch A
- 1:00-1:30 Shopping
- 1:30-2:30 3rd Period Class
- 2:30-3:00 Recess/Shopping
- 3:00 Vendor Mall Closes
- 3:00-3:30 Assembly/Door Prizes \*\*

Lunch included with price of tuition

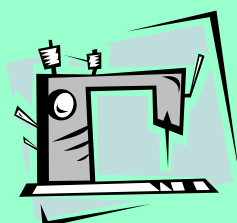


\*\*must be present to win

**2 GRAND PRIZES!!**

Donated by  
Quintessential Quilts  
Reedsburg/Madison

**Sewing machines!**



Donated by  
Ardyth's Sew n Vac  
Baraboo, WI

## 2018 LODI QUILT ACADEMY CLASS DESCRIPTIONS

Class difficulty: Easy/beginner/all 🧩 Intermediate or confident beginner 🧩🧩 Experienced quilter: 🧩🧩🧩

A -"Thinking Outside The Blocks" *Antoinette's Quilt Shop- Plover, WI* You started that project but don't know where to go with it next. This hands-on demo will get your creative juices flowing with ways to modify, update, and finish what you started. Supplies will be provided. **NO KIT FEE** 🧩

B -"Mini Barn Quilt 12 inch squared" **ALL DAY CLASS** *Ardyth's Sew N Vac- Baraboo, WI* This is a workshop that friends can enjoy together. The design will be pre-drafted before class and primed on both sides. Everyone will have a different quilt block design drafted on their mini board. All supplies are provided. Bring clothes that you don't mind getting paint on. **KIT FEE \$28.00 Class Limit: 15** 🧩

C -"Intro to the Classic Curves Ruler from Color Girl Quilts" *Blue Bar Quilts- Madison, WI* Learn curved piecing basics with the Color Girl Classic Curve Ruler. Choose one of many modern, graphic patterns with versatile design and easy construction. These dynamic curvy blocks have infinite potential just by changing color and layout. Expand your piecing horizons with curves! **NO KIT FEE** 🧩🧩

D-"Quilts For Scrap Lovers" *Bungalow Quilting-Ripon, WI* Techniques for placing "difficult" fabrics. Also learn how to make fabric from different genres work well together in scrap quilting. This class is for everyone from beginner to advanced. **NO KIT FEE** 🧩

E -"Hot Pad Heaven" *Fabric Creations- Manitowoc, WI* Hot pads are easy, fun, and always a hit as gifts. Intro to books and patterns, many using fat quarters. Helpful hints for successful projects. Lots of samples. Great for any sewer from beginner to advanced. **NO KIT FEE** 🧩

F-"Using Transfer Eze on Wool For Lettering" *Holly and Ivy- Ripon, WI* Demo of Transfer Eze for lettering on wool with wool applique. Beginner level class with basic stitching knowledge. **KIT FEE \$25** Bring scissors, #24 Chenille needle, pencil and small 6 in ruler. Kit includes Transfer Eze, wool background, thread, pattern and wool for applique 🧩

G--"Quick Curves" *Homespun Fabrics- Endeavor, WI* -Make curves the quick and easy way with Quick Curve Rulers. For modern or traditional quilts. No pinning, no applique, no kidding. Some sewing machines will be set up in class for demos. **KIT FEE \$1.00** 🧩

H-**Quilting For Beginners" ALL DAY CLASS** *Needle-Quilting Workshop-Wausau, WI* Learn to make a baby quilt or table topper from the cutting to finishing (no, you won't leave with it finished). Bring your machine and either your own fabrics or purchase the kit. **Optional KIT FEE \$49.50** 🧩

Student Supply list (if not purchasing kit)

12-2 in x WOF strips of at least 6 colors

8-2 in x WOF background

1/3 yd for inner border

1 yd for outer border and binding

1 ¼ yds backing

Thread to match

Basic sewing supplies: sewing machine, scissors, pins etc.

I -"Borders" *Patches and Petals-Belleville, WI* It doesn't matter if it's plain or pieced— how to choose the border that will give your quilt the best possible finish. Inner borders, outer borders and binding all provide opportunities to add to the finished quilt. Learn how spacers can make any border fit your quilt. **NO KIT FEE** 🧩

J-"Bindings- With & Without the Binding Tool" *Pins & Pieces Quilts- Darlington, WI* Learn how to bind your quilt three ways. There will be many samples and ideas to show you what else can be made with the "Binding Tool". **KIT FEE \$5.00** 🧩

K-"Conquering Color Confusion" *Quilt Basket & Creations—Viroqua, WI* Does the thought of picking out fabric for a project cause concern, confusion, or cold sweats? Increase your color confidence. Explore the principles of color, view samples, and make your own color wheel/value chart. **NO KIT FEE**

L -**"Basic Wool Applique"** *Quilting Corner-Sparta, WI* You will learn how to use Heat and Bond Fusible, Adhere wools together, layer wools and learn the buttonhole stitch. You will receive a kit that is complete with wool, threads, and needle to complete the project. **KIT FEE \$10.00** 🧵

M -**"Free Motion Machine Quilting" ALL DAY CLASS** *Quintessential Quilts - Madison-* This all day hands-on workshop will take the fear out of free motion quilting on your home machine. Bring your machine and learn how to set it up correctly for free motion quilting. You will then practice a variety of techniques to learn the skills you need. **KIT FEE \$15.00 CLASS LIMIT OF 15 STUDENTS** 🧵 🧵

### Student Supply list

*Machine in good working condition with the ability to drop the feed dogs*

*Foot control, cord, and accessories including the manual, darning foot or open toe free motion quilting foot*

*20 or 30- 1" or 1 ½ " safety pins, Fabric Marker: water soluble, Frixion pen or Chaco-liner, 24" quilting ruler*

*Basic sewing supplies: Scissors, seam ripper, etc*

*1 spool 100% colored cotton thread 50 wt. Aurifil is recommended.*

*Have 1 bobbin wound with cotton thread. No cotton wrapped polyester.*

*A fabric kit of 2 quilt sandwiches with appropriate fabric and batting is included in the kit fee.*

*Supplies including some free motion feet will be available for purchase the day of the class. If you need to order a free motion foot please call Rose Mary@ 608-242-8555 with your machine make and model.*

N-**"Demystifying the Arts of Thread Sketching & Thread Painting"** *Quintessential Quilts Reedsburg* -Discover the difference between sketching and painting with thread. Learn which needles and thread to use, how to transfer and stabilize your image, and how to finish your design. Whether beginner or advanced textile artist, learn new techniques in this class. **NO KIT FEE Class limit:20 STUDENTS** 🧵 🧵 🧵

O-**"Fun Paper Piecing" ALL DAY** *Quintessential Quilts—Reedsburg "Tree Hugger"*. A perfect beginner project. Finished size is 26  $\frac{3}{4}$  in x 76  $\frac{3}{4}$  i. Kits include pattern with step by step photos, enough tissue paper foundations to make 2 tree quilts, and all the fabric you will need for the quilt top of the tree. Amounts needed for border, binding and backing can be found on the pattern. Everything is pre-cut so that fabric is sized to match with the paper piecing instructions. Little trimming and minimal waste! **KIT FEE \$70.00** Kit features Hoffman Bali Batiks- #1 Pine or #2 Silver 🧵 🧵

P-**"Sewing 101-Machine Knowledge"** *Riverside Sewing Repair-Poynette, WI* Learn proper techniques to take care of your machine for optimum sewing and quilting. Demonstration of simple tips and tricks. A class for all levels of sewers and quilters. This does not take the place of tune-ups or service but can get your machine running well and/or through a bind. Handout provided. **NO KIT FEE** 🧵

Q- **"Fabric Baskets"** *Stitch Supply Co-Altoona, WI* Create a basket with fabric scraps and cording. Once you have the technique down, the sky's the limit as to the size of basket you can make. Also great for coasters, trivets and even rugs. Printed tutorial will be given in class. **NO KIT FEE** 🧵

R- **"Oh The Things You Can Do With Fat Quarters"** *The Quilt Jeanne-Mt. Horeb, WI* Fat quarters in a quilt, or on a bag, just a few, or in a stack. How to use them, new or old, cut them, slice them, let's be bold. Then sew them up so many ways, you'll find out that it's fun to play. Oh, the quilts that you can make...Join the Quilt Jeanne to see all the things you can do with fat quarters. **NO KIT FEE** 🧵

S- **"What? No Quilt?"** *Village Creek- Lodi, WI* This lecture will show some simple, easy to do, sewing projects for you, your home, or as gifts. **NO KIT FEE** 🧵

**No class schedules will be sent in advance.**

**All Kit Fees will be paid to instructor on day of Quilt Academy**